

Anti-PRKAR2B Antibody
Rabbit polyclonal antibody to PRKAR2B
Catalog # AP59671**Specification**

Anti-PRKAR2B Antibody - Product Information

Application	WB, IHC
Primary Accession	P31323
Other Accession	P31324
Reactivity	Human, Mouse, Rat, Bovine
Host	Rabbit
Clonality	Polyclonal
Calculated MW	46302

Anti-PRKAR2B Antibody - Additional Information**Gene ID** 5577**Other Names**

cAMP-dependent protein kinase type II-beta regulatory subunit

Target/Specificity

Recognizes endogenous levels of PRKAR2B protein.

Dilution

WB~~WB (1/500 - 1/1000), IH (1/100 - 1/200)

IHC~~1:100~500

Format

Liquid in 0.42% Potassium phosphate, 0.87% Sodium chloride, pH 7.3, 30% glycerol, and 0.09% (W/V) sodium azide.

Storage

Store at -20 °C. Stable for 12 months from date of receipt

Anti-PRKAR2B Antibody - Protein Information**Name** PRKAR2B**Function**

Regulatory subunit of the cAMP-dependent protein kinases involved in cAMP signaling in cells. Type II regulatory chains mediate membrane association by binding to anchoring proteins, including the MAP2 kinase.

Cellular Location

Cytoplasm. Cell membrane. Note=Colocalizes with PJA2 in the cytoplasm and at the cell membrane

Tissue Location

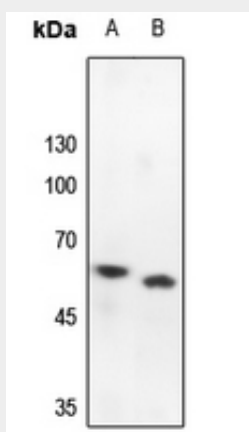
Four types of regulatory chains are found: I-alpha, I-beta, II-alpha, and II-beta. Their expression varies among tissues and is in some cases constitutive and in others inducible

Anti-PRKAR2B Antibody - Protocols

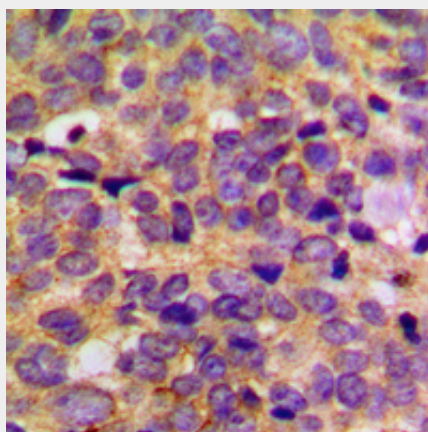
Provided below are standard protocols that you may find useful for product applications.

- [Western Blot](#)
- [Blocking Peptides](#)
- [Dot Blot](#)
- [Immunohistochemistry](#)
- [Immunofluorescence](#)
- [Immunoprecipitation](#)
- [Flow Cytometry](#)
- [Cell Culture](#)

Anti-PRKAR2B Antibody - Images



Western blot analysis of PRKAR2B expression in HEK293T (A), mouse testis (B) whole cell lysates.



Immunohistochemical analysis of PRKAR2B staining in human breast cancer formalin fixed paraffin embedded tissue section. The section was pre-treated using heat mediated antigen retrieval with sodium citrate buffer (pH 6.0). The section was then incubated with the antibody at room temperature and detected using an HRP conjugated compact polymer system. DAB was used as the chromogen. The section was then counterstained with haematoxylin and mounted

with DPX.

Anti-PRKAR2B Antibody - Background

KLH-conjugated synthetic peptide encompassing a sequence within the center region of human PRKAR2B. The exact sequence is proprietary.